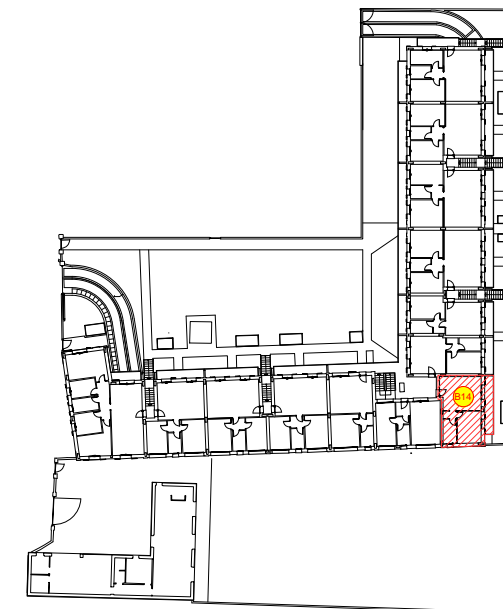
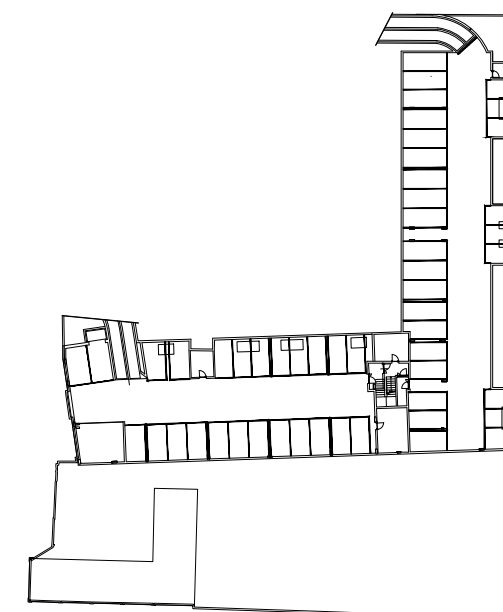


PLANIMETRIA PIANO PRIMO

N.	LOCALE	S.U. mq
1	SOGGIORNO-CUCINA	25.49
2	DISIMPEGNO	1.80
3	BAGNO	6.02
4	CAMERA	14.37
5	BALCONE	9.66



PLANIMETRIA GENERALE PIANO PRIMO



PLANIMETRIA GENERALE PIANO INTERRATO

PROPOSTA 01



Comune di OSIO SOPRA (BG)
RESIDENZA "CORTE BREMBO"
APPARTAMENTO B14

DATA: 24/03/2021

SCALA: 1:50

Cell.: 392-4424896 Innocenti Alessandro

Cell.: 335-6787031 Frigeni Omar

